

# Lake Mary Substation and 115-kV transmission tap line

Runestone Electric Association (REA) intends to re-build the “Lake Mary” electric substation from 41.6-kV to 115-kV service. The substation is currently located on REA’s property in Alexandria, Minnesota. To allow for expansion, the substation will be moved to Jackson Park SW, Lot 1, Block 2, Jackson Park Third Addition and be rebuilt. Great River Energy proposes to construct an approximately 0.19 mile, 115-kV transmission tap line called the RU-LMT line, to power the new substation project. The project will increase needed capacity of the substation and improve the reliability of the electrical system in the Alexandria area.

## Overview

Great River Energy proposes to connect into the Missouri River Energy Services’ (MRES) AA-129 115-kV transmission line 723 feet south of I-94. The project will then run south for approximately 860 feet, where the new line will turn west approximately 125 feet into the new Lake Mary Substation on Jackson Park SW (see map).

The proposed transmission line will generally require a 80-foot wide right-of-way. Property owners will be contacted to discuss the acquisition of new or modified easements for the transmission line right-of-way.

The poles will be round wood, wood laminate and steel poles. The poles will range in height from 65 to 90 feet above ground. (see example photo above). The span between poles will range from 350 to 450 feet apart.



*Typical 115 kV wood single circuit structure*

## Public involvement

Douglas County will conduct the permitting process for this project. The county will notify interested parties regarding the process and participation.

## Trees

The project may require removal of trees and vegetation along the proposed transmission line right-of-way for safety and maintenance purposes. A representative from Great River Energy will contact property owners before any tree work takes place.

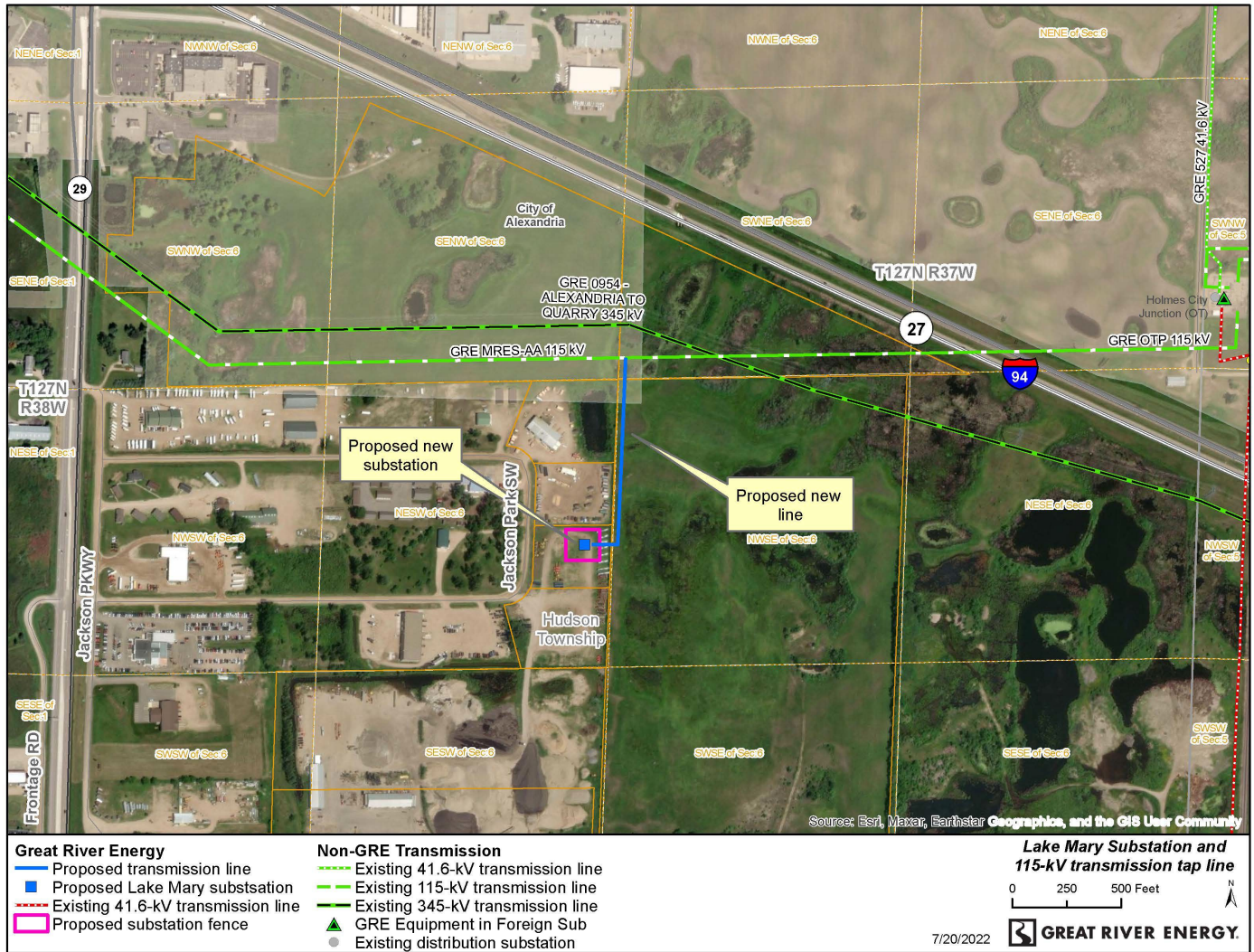
## Schedule

<b>Notifications</b>	Spring – Summer 2022
<b>Permitting</b>	Summer - Fall 2022
<b>Survey/design</b>	Spring - Summer 2022
<b>Easements/Acquisition</b>	Summer - Fall 2022
<b>Transmission line construction</b>	Winter 2022–Fall 2023
<b>Energization</b>	Fall 2023

## Quick facts

<b>Length</b>	– Approximately 0.19 mile
<b>Voltage</b>	– 115 kV
<b>Structures</b>	– Wood, wood laminate and steel poles
<b>Spans</b>	– 350 to 450 feet apart
<b>Right of way</b>	– 80-foot-wide right of way.
<b>Permits</b>	– As noted

## Proposed project



For project updates and information, visit [greatriverenergy.com/lakemary](https://greatriverenergy.com/lakemary) or contact:

**Peter M. Schaub**, Sr. Field Representative  
Land Rights  
612-801-7370 | [pschaub@greenergy.com](mailto:pschaub@greenergy.com)

**Marsha Parlow**, Transmission Permitting Specialist  
Transmission Permitting and Compliance  
612-345-1212 | [mparlow@greenergy.com](mailto:mparlow@greenergy.com)

## About Great River Energy

Great River Energy is a not-for-profit wholesale electric power cooperative which provides electricity to 28 member-owner distribution cooperatives. Together, our systems provide power to approximately two-thirds of Minnesota geographically and parts of Wisconsin, serving 700,000 families, farms and businesses.

7/20/2022